

Configuring Internet Explorer for DVR Web Interface

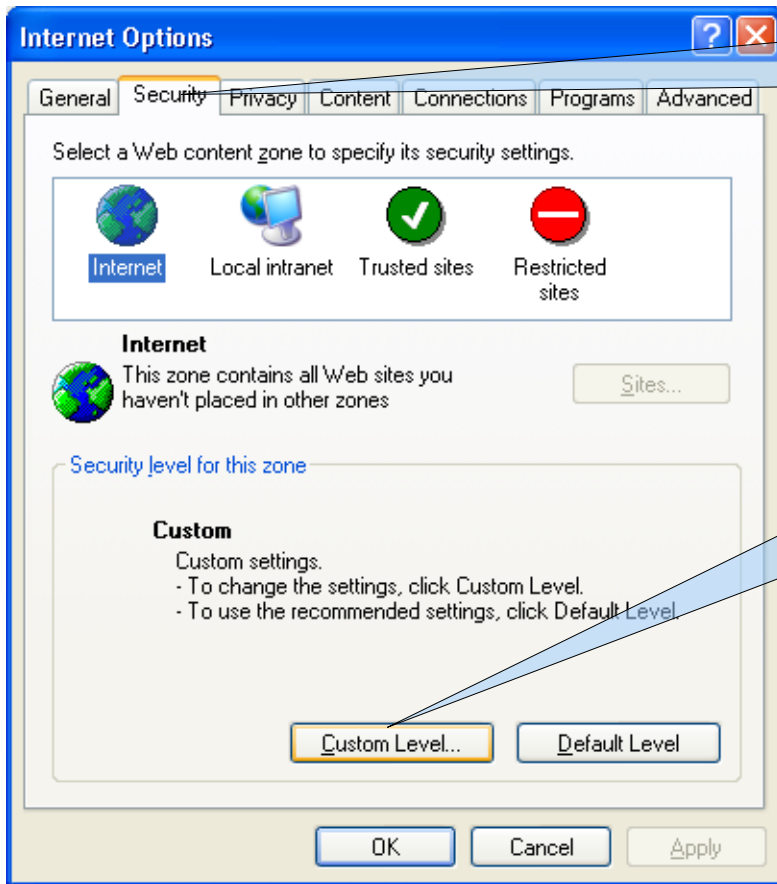


The message above indicates your Internet Explorer is not configured properly.

Click Tools then Internet Options (shown below).

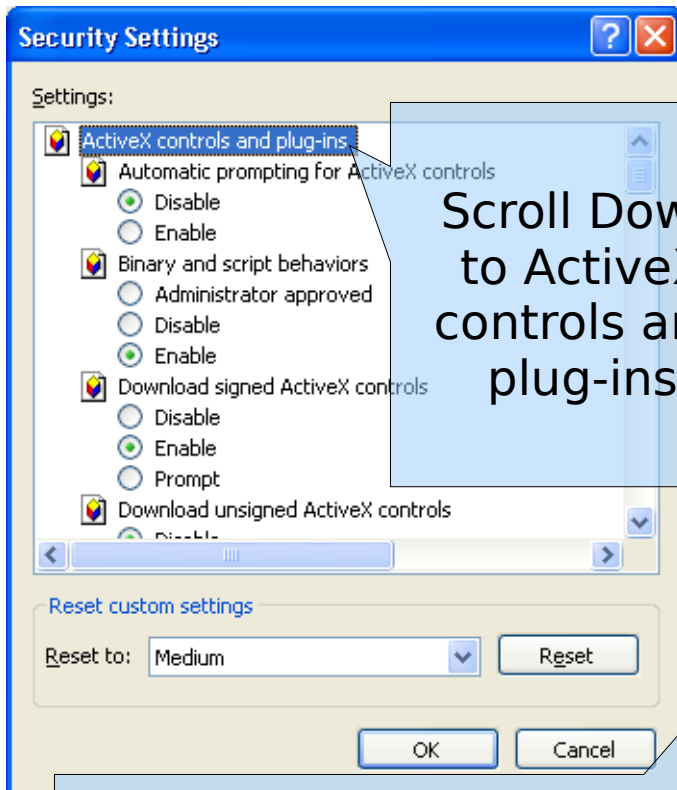


Configuring Internet Explorer for DVR Web Interface



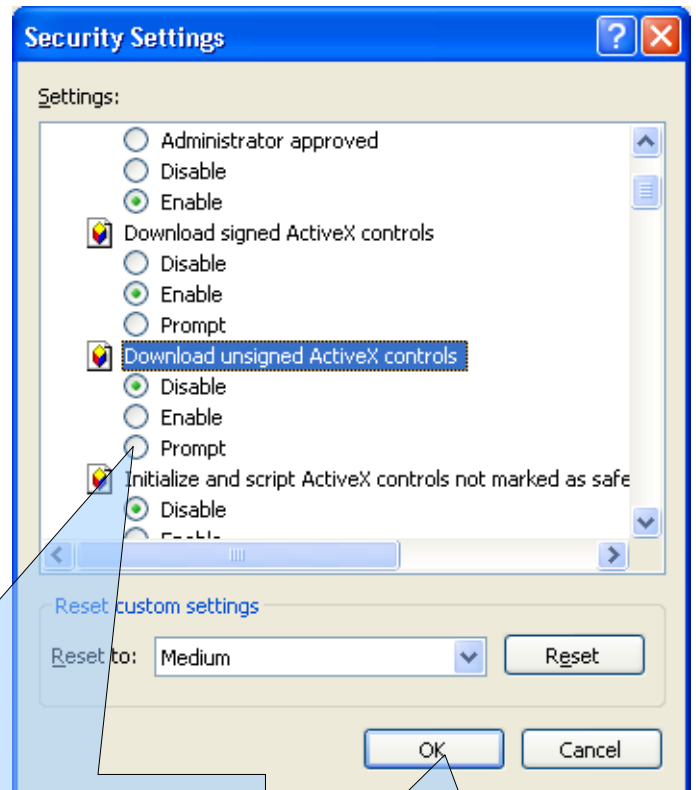
Click the Security Tab

Click Custom Level...



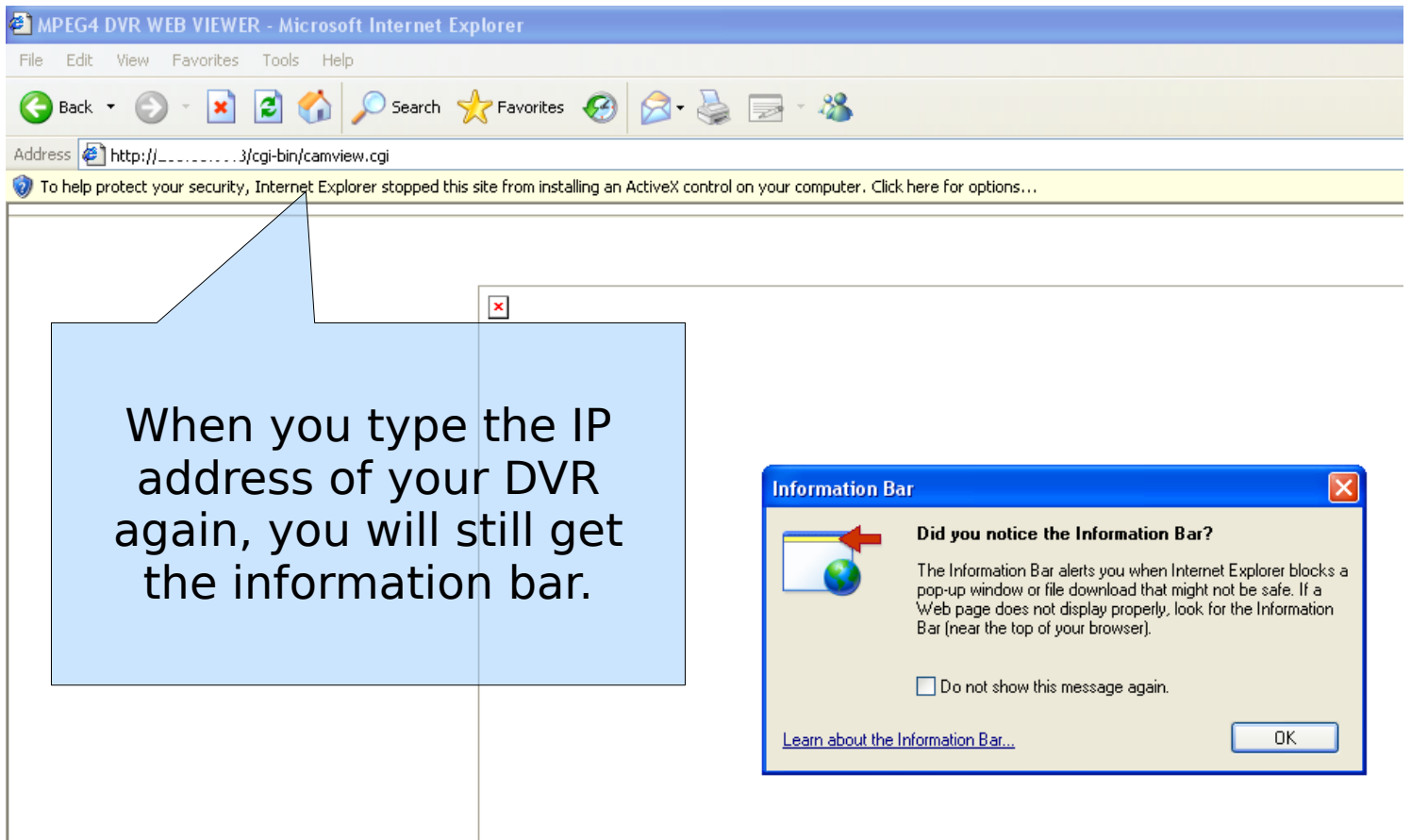
Scroll Down to ActiveX controls and plug-ins

Find Download unsigned ActiveX controls and change from 'Disable' to 'Prompt'.

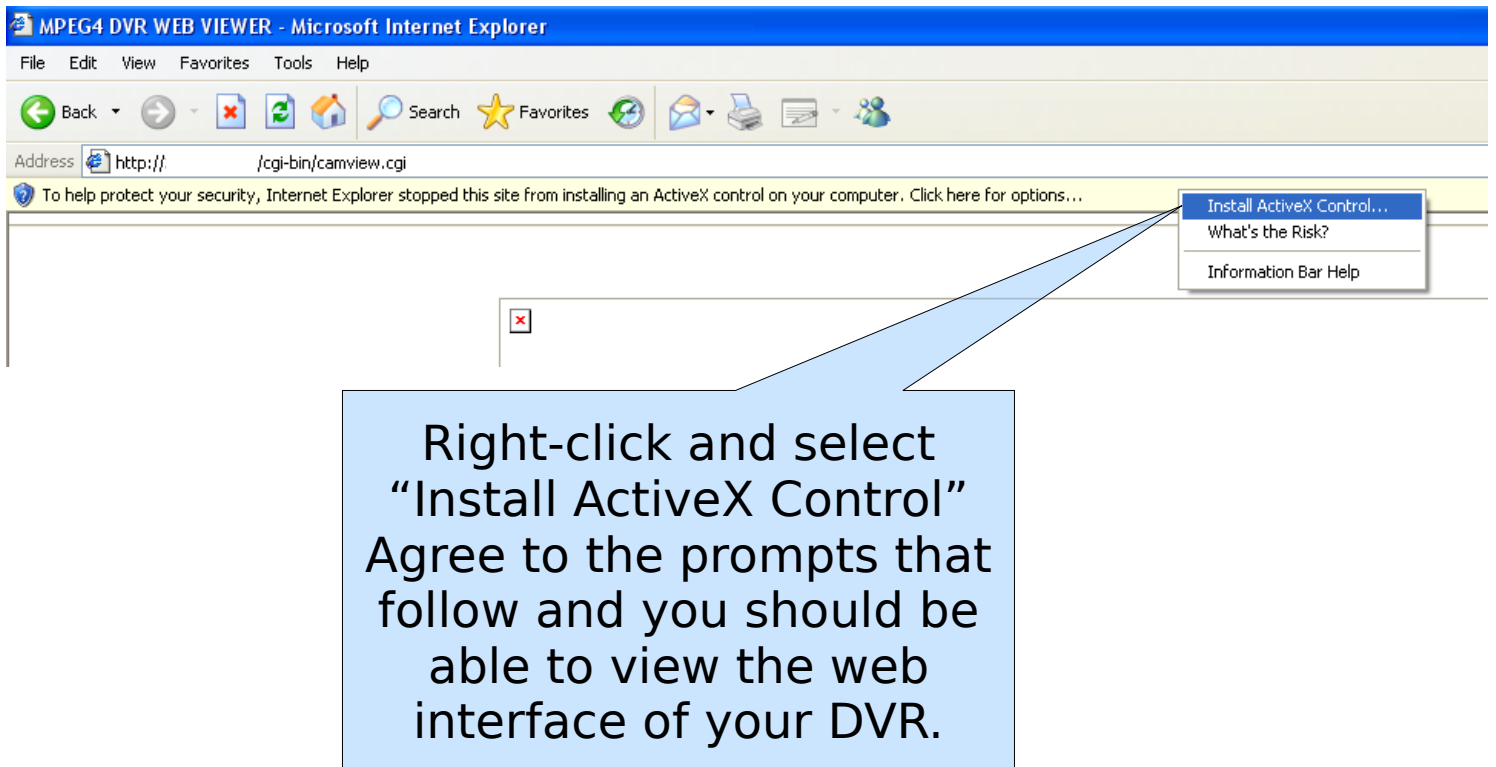


Click OK

Configuring Internet Explorer for DVR Web Interface



The screenshot shows the Microsoft Internet Explorer browser window titled "MPEG4 DVR WEB VIEWER". The address bar contains "http://.../cgi-bin/camview.cgi". A yellow security warning bar is visible at the top of the content area, stating: "To help protect your security, Internet Explorer stopped this site from installing an ActiveX control on your computer. Click here for options...". A blue callout box on the left contains the text: "When you type the IP address of your DVR again, you will still get the information bar." An "Information Bar" dialog box is open on the right, titled "Information Bar". It contains the text: "Did you notice the Information Bar? The Information Bar alerts you when Internet Explorer blocks a pop-up window or file download that might not be safe. If a Web page does not display properly, look for the Information Bar (near the top of your browser)." Below this text is a checkbox labeled "Do not show this message again." and an "OK" button. A link "Learn about the Information Bar..." is also present.



The screenshot shows the same Internet Explorer browser window. The yellow security warning bar is visible. A context menu is open over the warning bar, with the following options: "Install ActiveX Control...", "What's the Risk?", and "Information Bar Help". A blue callout box on the left contains the text: "Right-click and select 'Install ActiveX Control' Agree to the prompts that follow and you should be able to view the web interface of your DVR."