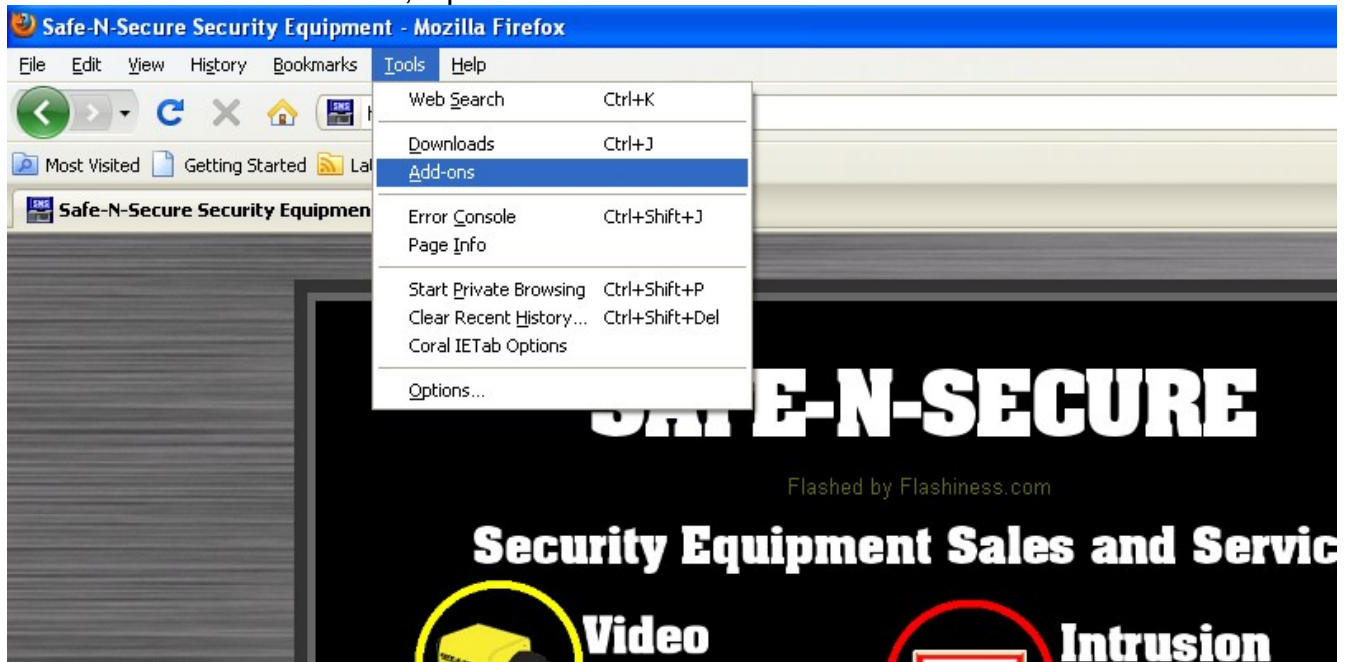


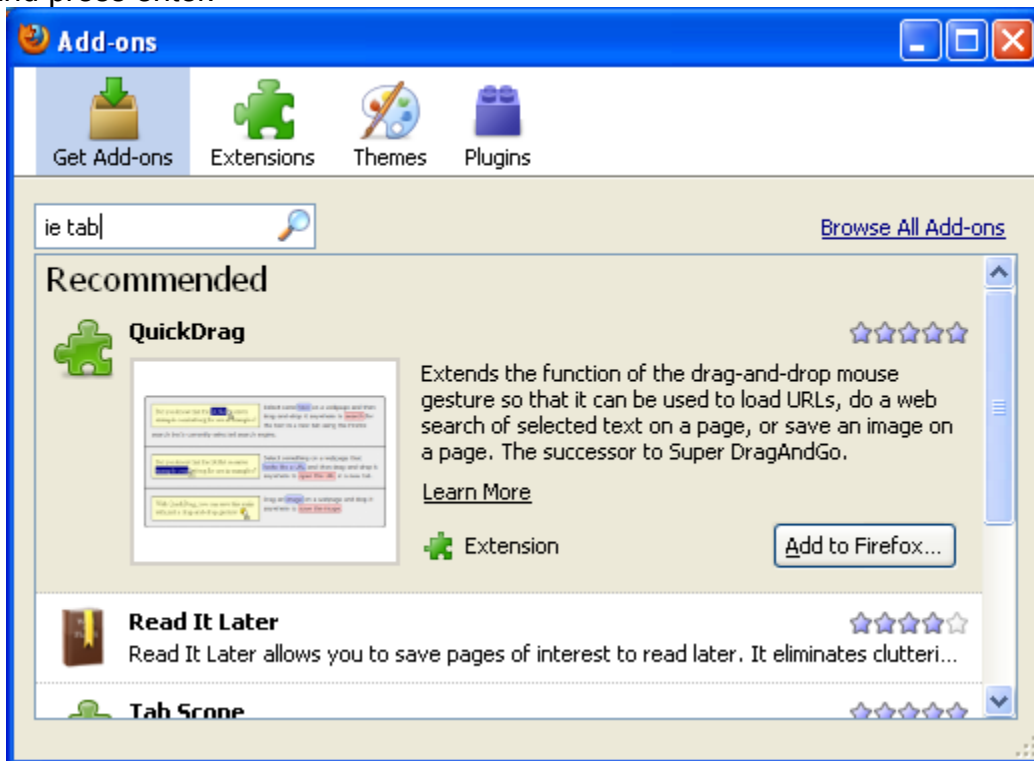
SAFE-N-SECURE Technology Services

Configuring Firefox to display Internet Explorer (IE) DVR Web Pages

1. To Get the IE TAB add on, Open Firefox and click on TOOLS then click on ADD-ONS

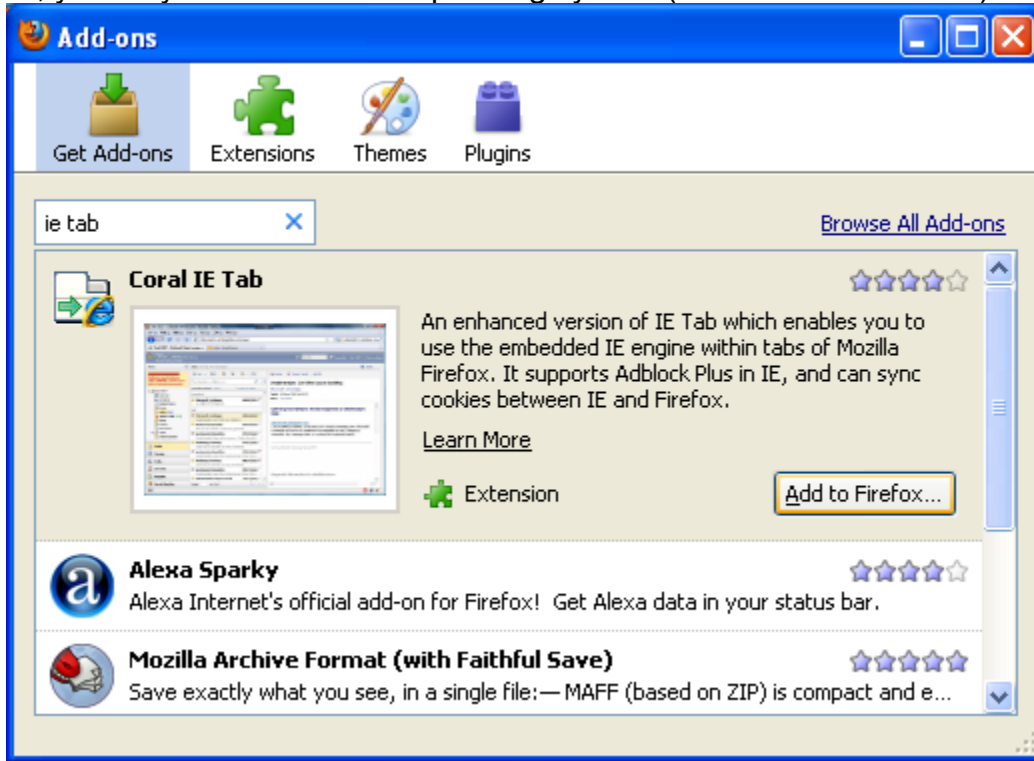


2. Make sure you are under the section 'Get Add-ons' then in the search box below, type in "ie tab" and press enter.

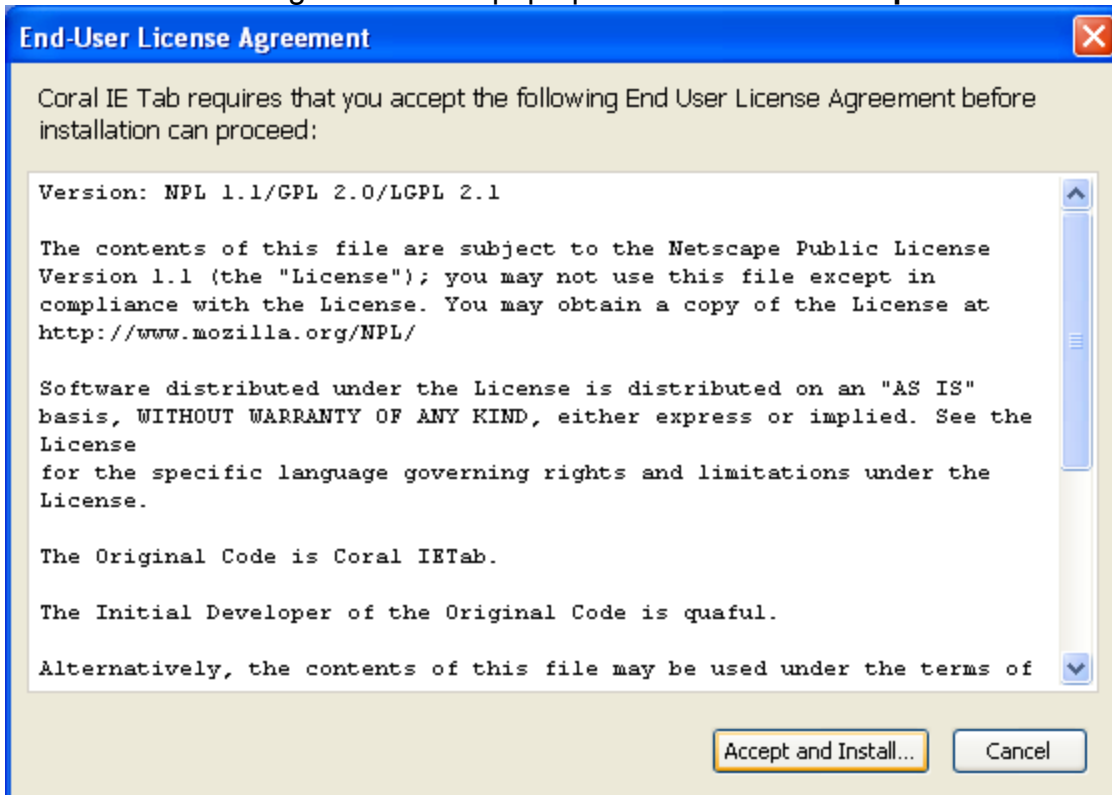


3. The Results should Show '**Coral IE Tab**' click on the button '**Add to Firefox**'

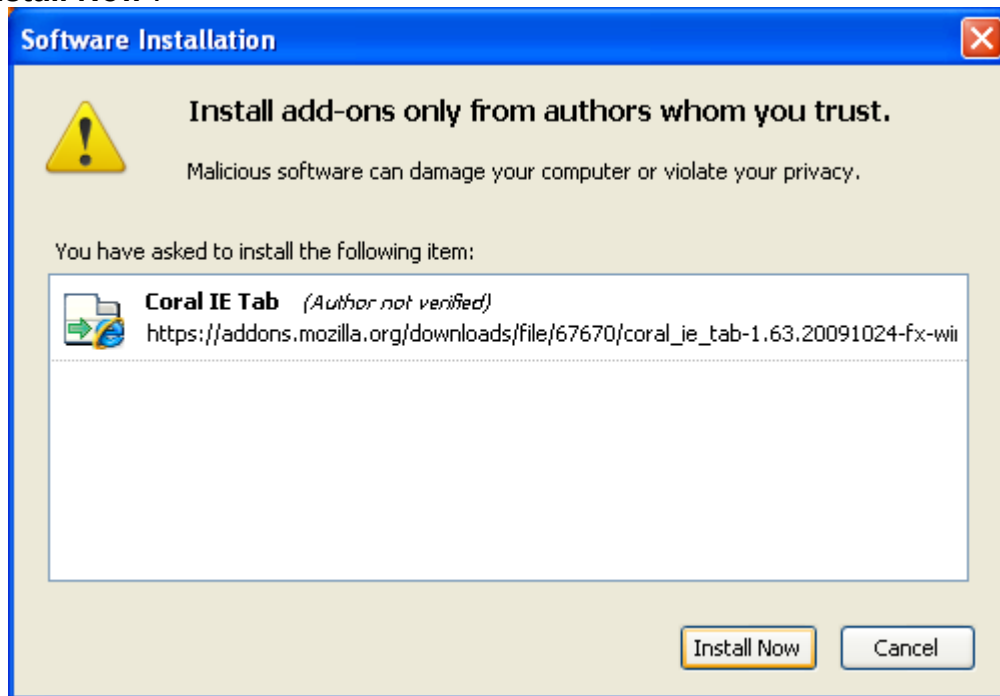
NOTE: IE Tab will only work with Windows-based PCs. If your search does not include Coral IE Tab, you may have a different operating system (such as Mac or Linux).



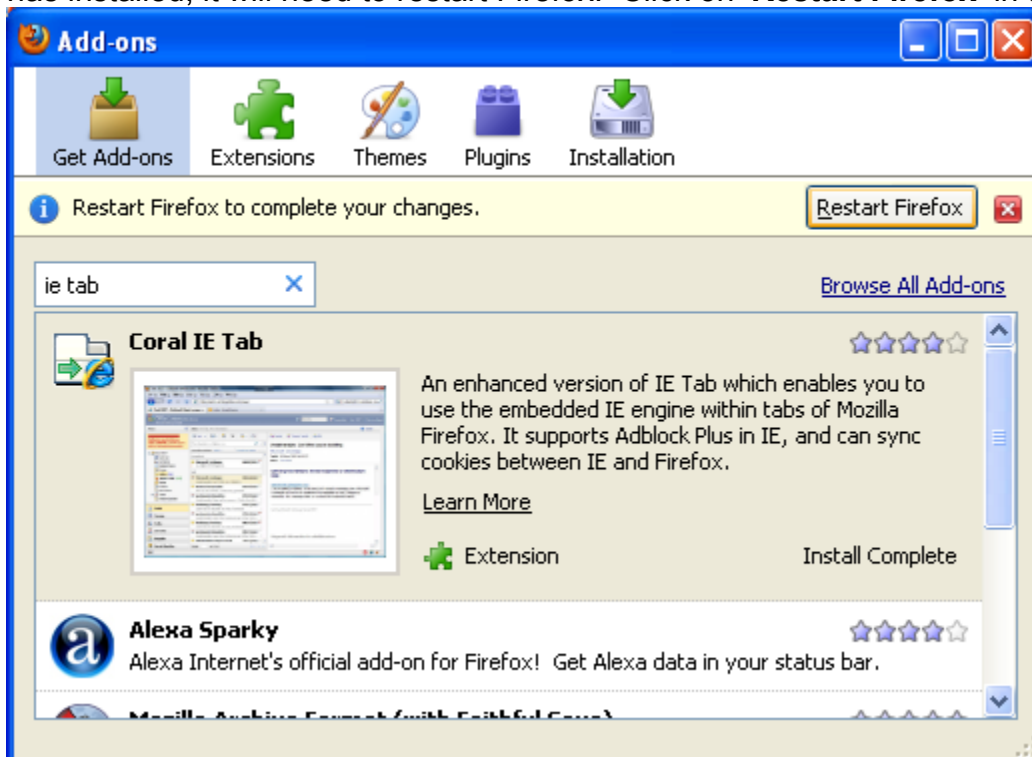
4. The 'End-User License Agreement' will pop up next. Click on '**Accept and Install...**'



5. On the Software Installation screen, wait for the button below to finish counting down, then Click on **'Install Now'**.



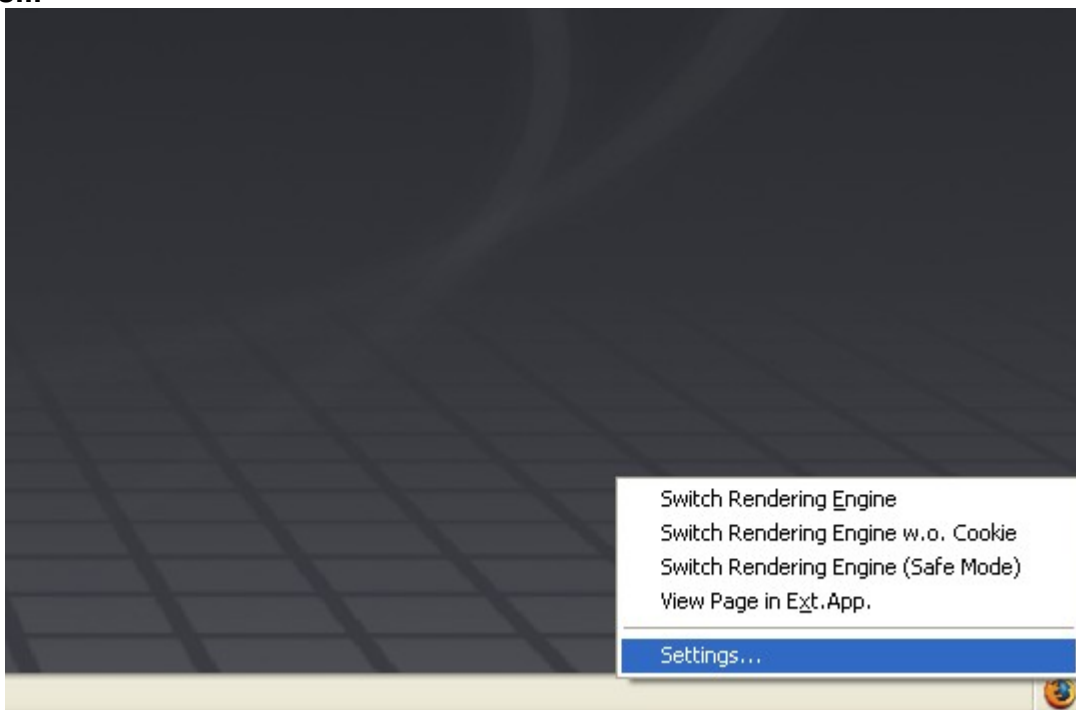
6. Once it has installed, it will need to restart Firefox. Click on **'Restart Firefox'** in the top.



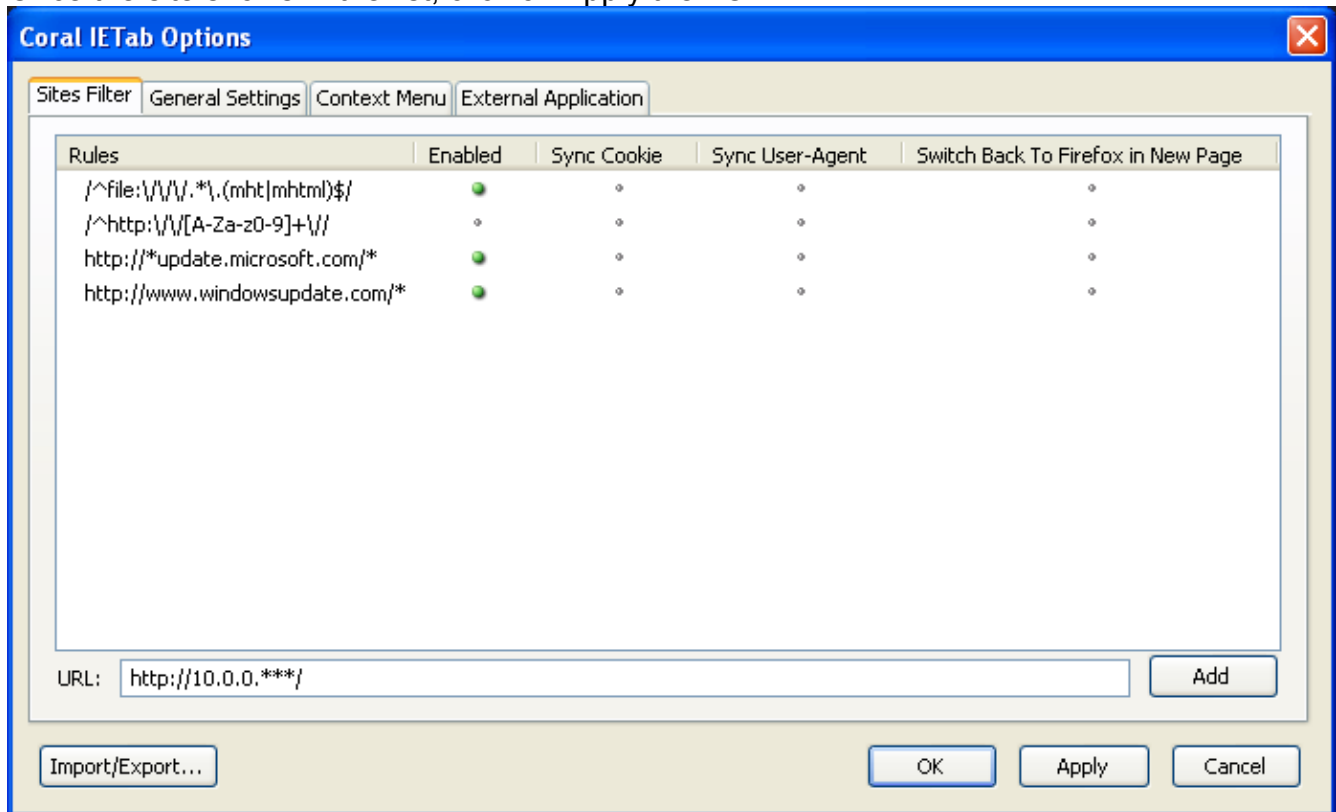
7. Once Firefox is restarted, you will have an icon in the lower right-hand corner of the browser window, if you move your mouse over this, it will display the options to switch between showing the web site in Internet explorer or Firefox.



8. To add a website to the list so it will ALWAYS load in an Internet Explorer Tab; go to the website first, then right click on the Firefox icon in the lower right corner and choose 'Settings...'



9. The Coral IETab options window will come up, the website you want to go to should already show in the URL field at the bottom. Simply Click on the ADD button to add it to the list. Once the site shows in the list, click on Apply then OK.



10. Refresh the webpage, and now it should load with the Internet Explorer Icon showing in the lower right-hand corner of the screen. Any sites that need to be run in Internet Explorer can be added to this list, so that you can run then through Firefox.

